

# A PEEK INSIDE...

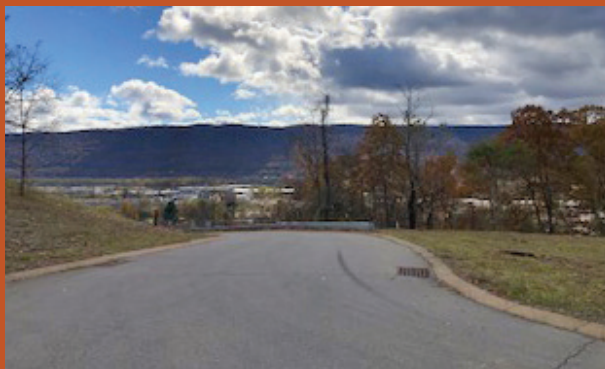


Come see your future home  
or  
if interested contact...

**NEW TOWNHOME COMMUNITY**  
8 WISTERIA LANE, WILLIAMSPORT

For Sales Information:  
**570-360-9797**  
[woodlandheightsdev.com](http://woodlandheightsdev.com)

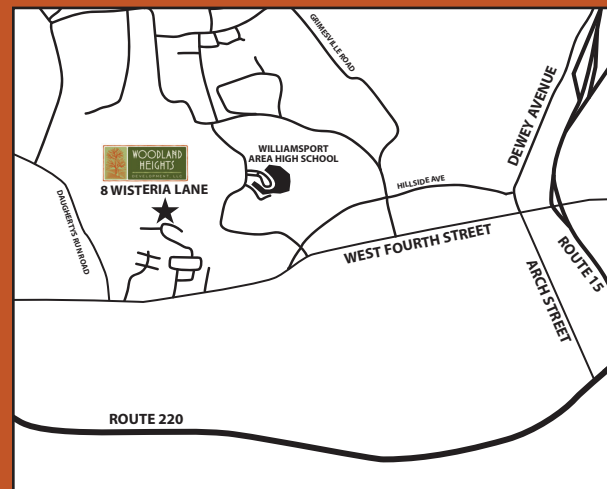
 **WOODLAND HEIGHTS**  
DEVELOPMENT, LLC



8 Wisteria Lane  
Williamsport, PA 17701  
570-360-9797



**Townhome Community**  
New two story townhome  
community near the  
Williamsport Area High School.

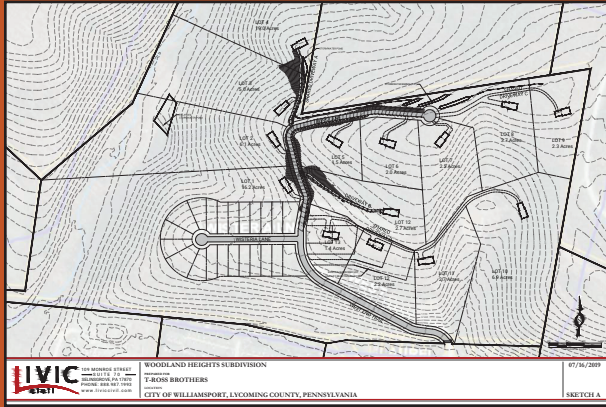




# ABOUT THE HOMES

There will be 14 single family lots in phase 2 on the grounds above the townhomes.

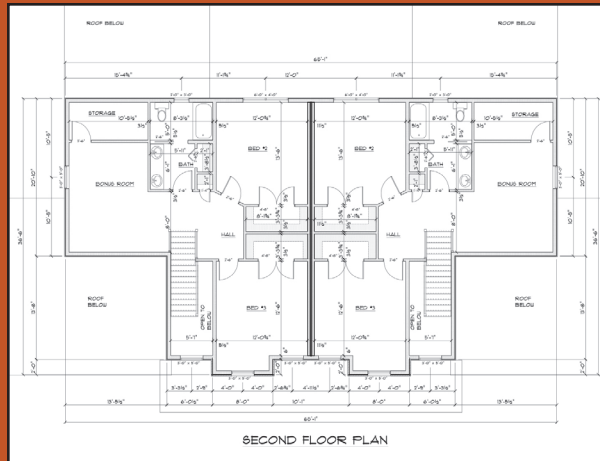
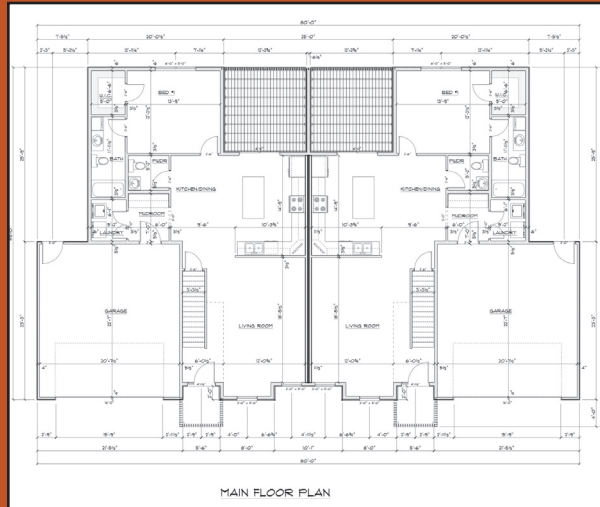
These lots still need to be developed before they can be sold and available for single family homes to be built.



There will be ten 2-unit townhomes and two single family homes built in the cul-de-sac on Wisteria Lane.



The new townhomes will feature a 1920 square foot spacious floor plan. It will be an open concept with a first floor master suite. There will be options to select a 3 or 4 bedroom floorplan. The exteriors will feature stone and siding.



## Townhomes feature:

- 2 Car garage
- Master suite (1st floor option)
- Hardwood floors
- Kitchen island
- Granite kitchen countertops
- Bathroom tile and granite tops
- Central air conditioning
- Public water and sewer
- 1st floor decks
- Full unfinished basements



## Woodland Heights Development, LLC

**570-360-9797**